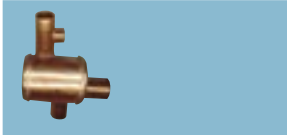


AIR SEPERATOR



- Air seperator 22 mm Standard 8.68
- Air seperator 22 mm with Cold Feed 8.50
- Air seperator 28 mm Standard 12.56

AIR VENT



- Air vent 1/2 brass 0.85
- Air vent 1/8 brass 0.59
- Air vent 1/8 automatic with hydroscopic w'sb 1.47
- Air Vent 15mm end feedinternal to fittings 1.35
- Air vent - Thumb Screw style 0.69
- Air Vent 15mm end feed(over pipe) 1.97

BRASS BACKNUT

- Brass Backnut 1 1.41
- Brass Backnut 1 2.14
- Brass Backnut 1 1/2 2.82
- Brass Backnut 1/2 0.73
- Brass Backnut 3/4 1.00

BRASS BUSH



- Brass bush 3/8 x 1/4 0.47
- Brass bush 1/4 x 1/8 0.41
- Brass bush 1/2 x 1/8 1.00
- Brass bush 1/2 x 3/8 0.55
- Brass bush 1/2 x 1/4 0.76
- Brass bush 3/4 x 1/2 0.73
- Brass bush 1 x 1/2 1.65
- Brass bush 1 x 3/4 1.12
- Brass bush 1 1/4x 1/2 3.64
- Brass bush 1 1/4 x 3/4 2.53
- Brass bush 1 1/4 x 1 4.61
- Brass bush 1 1/2 x 1/2 5.05
- Brass bush 1 1/2 x 3/4 3.82
- Brass bush 1 1/2 x 1 2.59
- Brass bush 2 x 1 1/2 5.88

CHROME BUSH



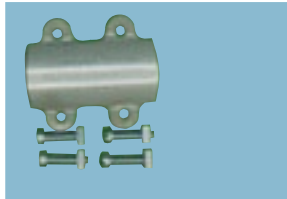
- Chrome bush 3/4 x 1/2 2.20

BRASS CAP



- Brass cap 1/2 0.74
- Brass cap 1/2 - Chrome 2.80
- Brass cap 3/4 1.00
- Brass cap 1 1.36

REPAIR PIPE CLAMP



- Repair Pipe Clampfits 15-28mm pipe 4.70

DOUBLE CHECK VALVE



- Double check valve 15 mm 3.90
- Double check valve 22 mm 7.64
- Double check valve 28 mm DZR 17.51

DRAIN OFF COCK



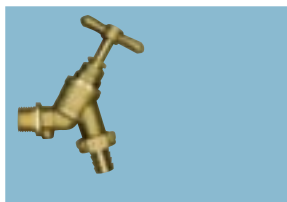
- Drain off cock 1/2 - Type A BS 2879 1.90
- Drain off cock 15 mm - Type A BS 2879 1.76
- Drain off cock 15 mm - Selfcutting 5.03

GATE VALVE



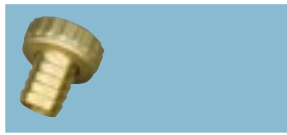
- Gate valve 15 mm 2.56
- Gate valve 15 mm Lockshield 3.83
- Gate valve 22 mm 3.31
- Gate valve 22 mm Lockshield 4.37
- Gate valve 28 mm 5.50
- Gate valve 35mm 16.07
- Gate valve 42mm 20.30
- Gate valve 1/2 FI 3.20
- Gate valve 1/2 FI Lockshield 1.60
- Gate valve 3/4 FI 5.01

HOSE UNION BIBCOCK



- Hose union bibcock Lever 1/2 5.11
- Hose union bibcock 1/2 4.58
- Hose union bibcock 1/2 with backplate & DC valve 8.34
- Hose union bibcock 1/2 with backplate & tube 7.74
- Hose union bibcock 3/4 11.10
- H/U bibcock with Double check valve 1/2 6.29
- H/U bibcock with Double check valve 3/4 11.70
- H/U bibcock with DC valve - Safetap 22.45

HOSE UNION NUT & TAIL



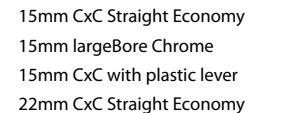
- Hose union nut & tail 1/2 1.29

NON RETURN VALVE



- Non return valve 15 mm 2.82
- Non return valve 22 mm 4.82
- Non return valve 28 mm 8.70

ISOLATING VALVE



- 15mm CxC Straight Economy 1.60
- 15mm largeBore Chrome 2.19
- 15mm CxC with plastic lever 2.47
- 22mm CxC Straight Economy 3.94

SERVICE VALVE



- 15x10mm CxC Straight Conex 4.12
- 15mm CxC Straight Conex 2.36
- 15mm CxFI Straight swivel 2.29
- 15mm CxFI Swivel elbow 2.47
- 22mm CxC Straight Conex 6.12

LEVER BALLVALVE



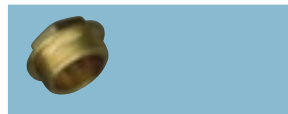
- Lever ballvalve - 1/2 F x F Yellow 2.80
- Lever ballvalve - 3/4 F x F Yellow 3.85
- Lever ballvalve - 1 F x F Yellow 14.61
- Lever ballvalve - 1 1/4 F x F Yellow 13.09
- Lever ballvalve - 1 1/2 F x F Yellow 18.40
- Lever ballvalve - 15 mm C x C Yellow 3.74
- Lever ballvalve - 15 mm C x C Blue 3.74
- Lever ballvalve - 15 mm C x C Red 3.74
- Lever ballvalve - 2 F x F Yellow 32.70
- Lever ballvalve - 22 mm C x C Yellow 5.93
- Lever ballvalve - 22 mm C x C Blue 5.93
- Lever ballvalve - 22 mm C x C Red 5.93
- Lever ballvalve - 28 mm C x C Yellow 11.76
- Lever ballvalve - 35 mm C x C Yellow 33.39
- Lever ballvalve - 42 mm C x C Yellow 49.07
- Lever ballvalve - 54 mm C x C Yellow 62.02

BRASS NIPPLE



- Brass nipple 1/2 x 1/2 1.53
- Brass nipple 3/4 x 3/4 1.82
- Brass nipple 1 x 1 3.17
- Brass nipple 1 1/4 x 1 1/4 9.28
- Brass nipple 1 1/2 x 1 1/2 6.76

BRASS PLUG



- Brass plug 1/4 0.88
- Brass plug 1/2 0.87
- Brass plug 3/4 1.23
- Brass plug 1 1.82
- Brass plug 1 1/4 4.82
- Brass plug 1 1/2 3.49

BRASS SOCKETS



- Brass sockets 1/2 1.23
- Brass sockets 3/4 2.06
- Brass sockets 1 3.17

STOPCOCK



- Stopcock 15 mm - Crutch head 5.05
- Stopcock 22 mm - Crutch head 10.05
- Stopcock 28 mm - Crutch head 12.69

SAFETY VALVE



- Safety valve 1/2 2.06

TAP EXTENSION



- Tap extension MxF 1/2 0.92
- Tap extension MxF 3/4 1.59

WASHING MACHINE TEE VALVE



- Washing machine tee valve 3/4 x 15 mm 3.17

WASHING MACHINE VALVE



- Washing machine valve 3/4 x 15 mm 1.67
- Washing machine valve 90°3/4 x 15 mm 2.41

WASHING MACHINE STOP COCK



- Washing Machine Stop Cock 6.56

WALL PLATE



- Wall plate with copper tubetail 4.98
- Wall plate elbow angled with side plate 2.83